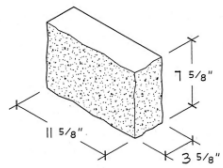
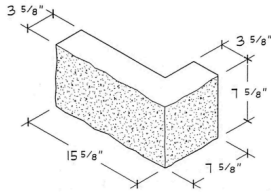


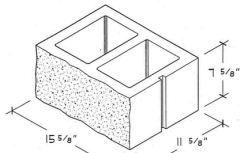
Shapes and Diagrams



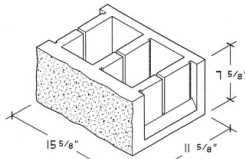
4x8x12 PSF EC
100 x 200 x 300 mm



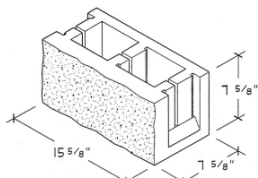
4x8x16 PSF RC
100 x 200 x 400 mm



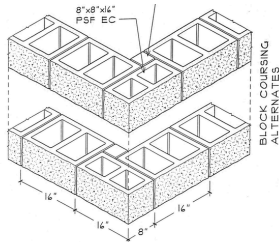
12x8x16 PSF
300 x 200 x 400 mm



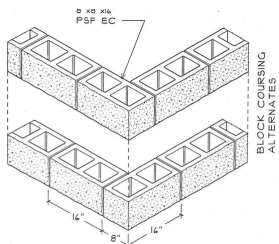
12x8x16 PSF KO BBL
300 x 200 x 400 mm



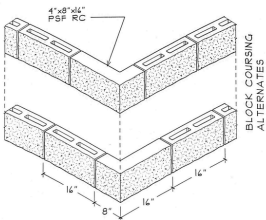
8x8x16 PSF KO BBL
200 x 200 x 400 mm



CORNER DETAIL:
12" WALL TO 12" WALL



CORNER DETAIL:
8" WALL TO 8" WALL



CORNER DETAIL:
4" WALL TO 4" WALL

Contact Us



Phone

(252) 523-5136



Website

www.eastwestmasonry.com



Address

720 East New Bern Rd
Kinston, NC 28502

*"As Far as the East is From the West,
So Far Hath He Removed
Our Transgressions From Us"*

Masonry Focused



EASTWEST
PRODUCTS

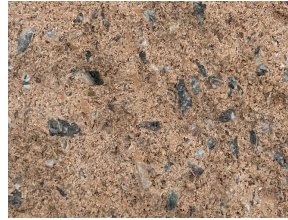
American Owned



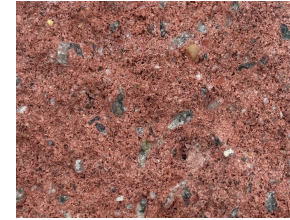
Architectural Concrete Masonry Units



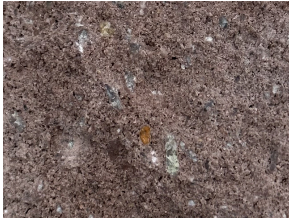
**#161
Titanium**
Silver Gray*



**#103
Peach**
Bowman Peach*



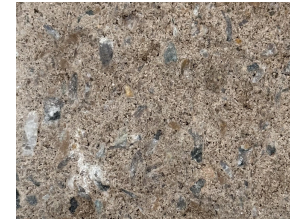
**#153
Crushed Coral**
Crushed Coral*



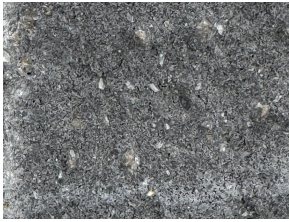
**#191
Sienna Sunset**
Burlington*



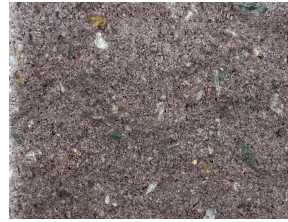
**#113
Arctic White**
White*



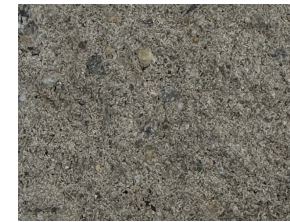
**#172
Oatmeal**
Clay*



**#201 Thunder
Gray**
Thunder Gray*

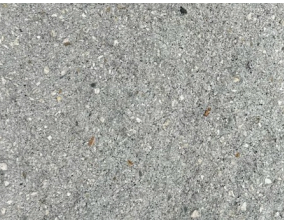


**#123
Dusty Rose**
JC281 Plum*



**#182
Twilight Gray**
City Hall Beige*

Paintable or Stainable Split Face



Color is not controlled during production process of paintable and stainable splitface. Variation could occur between stretchers, corners, and specialty block.



**#133
Base Blend**
Army Peach*



**#213
Coastal Sand**
Antique Buff*



**#143
Sahara**
Lion's Mane*

All colors are available in both a split face or ground face finish

* Indicates our recommended Mortar Mix



Mapei
Integral Water Repellent Additive