



GRAVITY STONE®

SO SIMPLE. IT'S ADVANCED

An Engineered Earth Retention Product

Meets ASTM C 1372: Standard Specification for Segmental Retaining Wall Units

The 1-2-6 Advantage

- One product
- Two systems
- Six Structural Solutions

"During my 25 years of site remediation I have not found a more economical, innovative, and flexible system than GravityStone®"
- Ty Gillis, GradeSolutions

■ IMPROVING SRW SOLUTIONS:

- Seamlessly switch between MSE and Modular reinforcement systems, without interrupting visual aesthetics.

■ BELOW GRADE:

- Fills: Geogrid Reinforced (MSE)
- Cuts: Modular System
- Poor Soils: Slide Stop
- Sustainable Sites: Green Walls

■ ABOVE GRADE:

- Barriers/Parapets
- Columns
- Planters

■ AESTHETICS:

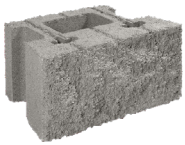
- Optional Textures and Geometry

■ ALIGNMENT:

- Reversible Alignment Plug (RAP) allows for batter and zero batter walls



GravityStone is a licensed and trademarked product of WestBlock Systems, and is protected under U.S. and international patents.



Core
12" x 8" x 18"



Thin Face
6" x 8" x 18"



Trunk
24" x 8" x 4"



Anchor Junction
12" x 8" x 6"



Mini Cell:
20" Deep



Single Cell:
32" Deep
+27" each additional cell



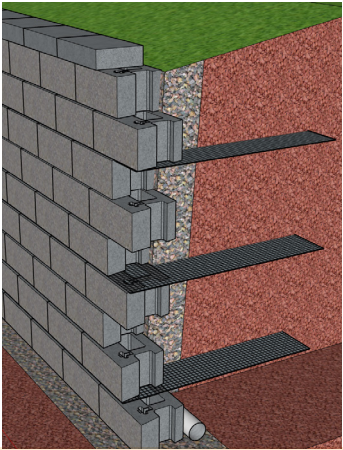
Barrier/Parapet:
21" Deep

Two Systems

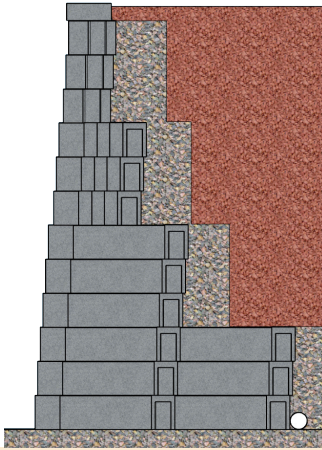
MSE: "Fill" sites typically are best served by Core combined with Geogrid reinforcement (MSE).

Modular: Assemble the components and place the aggregate, it's that easy. Modular's narrow footprint typically requires 30% less depth than MSE, allowing a fit on tight sites, minimizing excavation, and allowing for all weather construction.

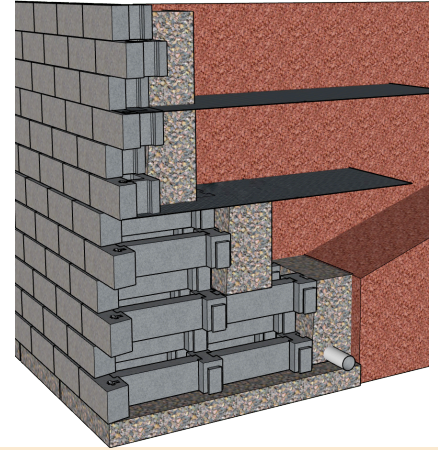
Structural Solutions



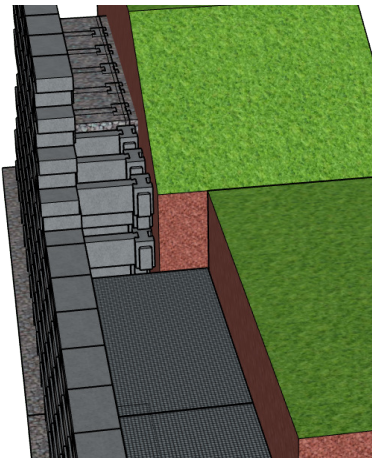
GravityStone® Core
With Geogrid (MSE) reinforcement
for use in "Fills"



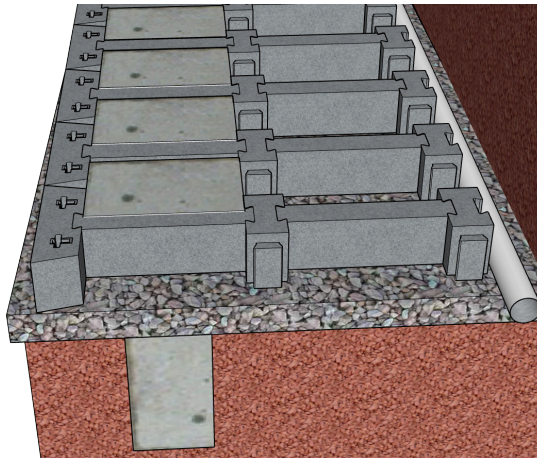
GravityStone® Modular
Components assembled into "Cells,"
form narrow walls ideal for "Cuts"



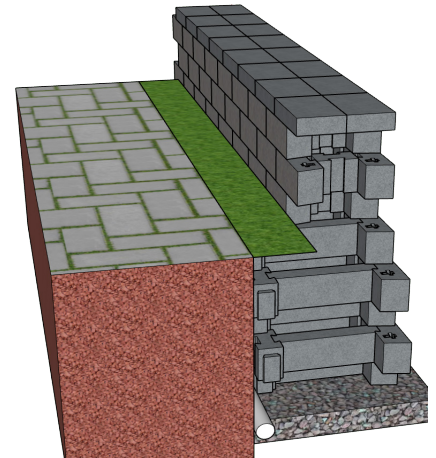
Vertical Hybrid
Combine the two systems above or
below



Lateral Hybrid
Combine the two systems
side by side



Slide Stop®
When soils are weak and the wall must
be narrow



Barrier/Parapets/Columns
Create above grade features
using Modular components